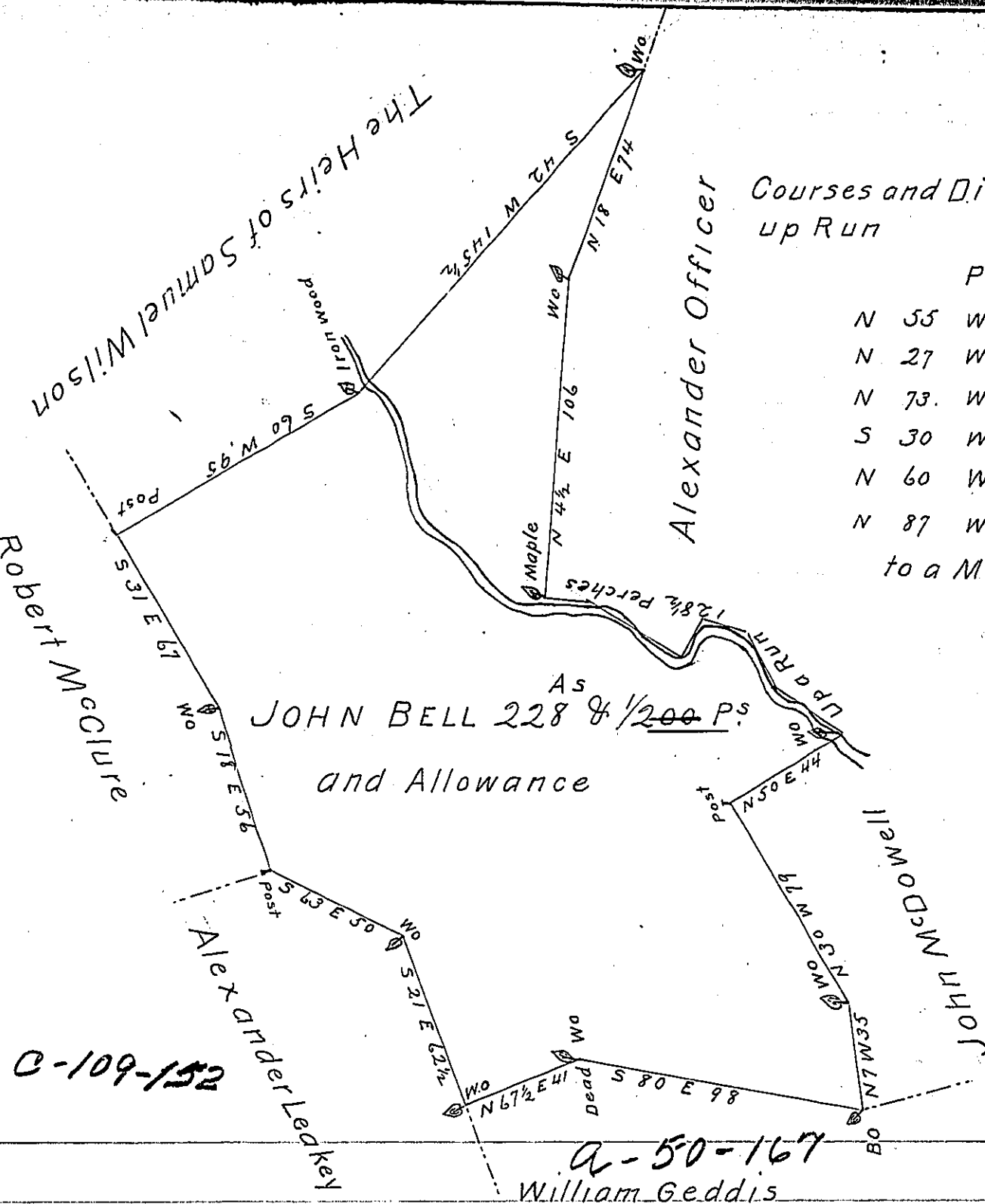


C/33-33



Courses and Distances up Run

Perches	
N 55	W 26 1/2
N 27	W 22
N 73	W 15
S 30	W 14
N 60	W 38
N 87	W 13

to a Maple

C-109-152

a-50-167  
William Geddis

The Draught of a Tract of Land Called  
 Situate in West Pennsborough Township Cumberland  
 and County Containing two hundred and twenty  
 eight Acres and One hundred Perches and the us-  
 ual Allowance of Six Cent for Roads & ca  
 Surveyed for John Bell the 3<sup>rd</sup> Day of March  
 1785 in Pursuance of a Warrant from the Supreme  
 Executive Council of the Commonwealth of Penn-  
 sylvania bearing Date at Philad. the 18<sup>th</sup> Day  
 of February 1785  
 To John Lukens Esq. }  
 Surveyor General } W<sup>o</sup> Saml Lyon D. B.

IN TESTIMONY that the above is a copy of the original remaining on file in  
 the Department of Internal Affairs of Pennsylvania, made  
 conformably to an Act of Assembly approved the 16th day of  
 February, 1833, I have hereunto set my Hand and caused  
 the Seal of said Department to be affixed at Harrisburg,  
 this second day of November 1903,

*James P. Brown*  
 Secretary of Internal Affairs.